



## Working Harbor Committee

For the heritage and future of the harbor of New York and New Jersey

# ON THE HIP\*

E-Newsletter of the Working Harbor Committee

14 Oct 2011

### Contents

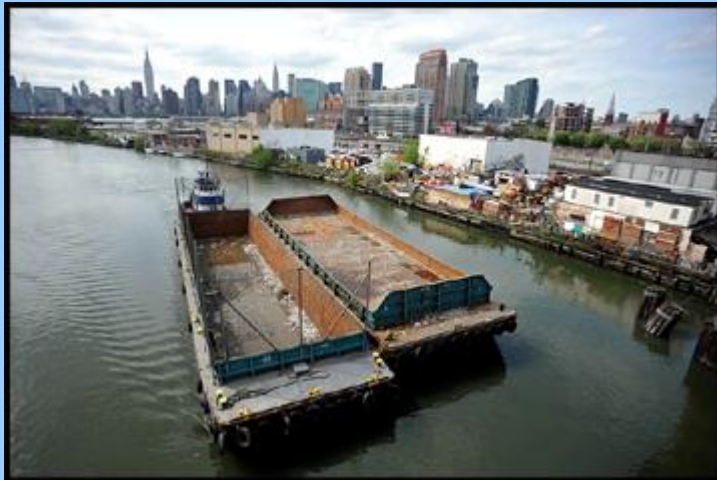
**Two Newtown Creek Tours - 23 Oct**

**Exploring Newtown Creek**

**Circumnavigation of Staten Island and Lighthouse Tour (Sold out)**

**Profile: Meg Black**

### Two Newtown Creek Tours - One Day - Sunday, 23 Oct



Working Harbor  
Committee and the  
Newtown Creek  
Alliance

*present*

Two low cost  
neighborhood  
Newtown Creek

educational cruises!

Sunday, 23 October, 2011

Two Cruises - 10 am to noon and 1 pm to 3 pm

Departs from Pier 17 - South Street Seaport

*Foot of Fulton Street - Downtown Manhattan*

*A C J Z 2 3 4 or 5 Train to Fulton Street & walk east to Pier 17*

#### ***Ticket includes:***

***Souvenir Tour Brochure with historical information and vintage maps.***

***Tour will be narrated by experienced historical  
and environmental guest speakers.***

***Come aboard for an intense Newtown Creek exploration! Our comfortable charter boat will travel the length of Newtown Creek. The tour will pause at many interesting locations for narration and discussion. Guest narrators will cover historical, environmental, and conservation issues. Large comfortable vessel with indoor & outdoor seating. Cruise runs rain or shine.***

*Low price of **only \$10** made possible by funding from the **NYCEF Newtown Creek Fund of the Hudson River Foundation***

**Tickets will go fast at this price so buy now!!!**  
**[Click Here for Tickets](#)**

## **Exploring Newtown Creek**

The Working Harbor Committee has provided numerous tours exploring Newtown Creek. Where is it? Why do we go there? How does it fit in with the working Harbor of New York? If you have been wondering just that, here is a short history of the creek.

Newtown Creek is an estuary that divides western Queens from northern Brooklyn. The name New Town came from the settlement of Dutch and British in



(c) Mitch Waxman

the area translating from Nieuwe Stad. The settlement has now become the neighborhood we know as Elmhurst, Queens. The creek retains the name Newtown. The creek begins near the intersection of 47th Street and Grand Avenue on the Brooklyn-Queens border. It empties into the East River at 2nd Street and 54th Avenue in Long Island City.

It is one of the oldest industrial corridors in the United States. Since the 1800's the creek has served as a center for manufacturing jobs in New York City. In the 1950's Newtown Creek was the most heavily used industrial port in the Northeastern United States. The decline of American manufacturing left behind abandoned properties and unemployment in the area and the heavy industrial usage of the creek left a great deal of pollution to the estuary.

In more recent history the surrounding communities of Newtown Creek have come together to restore the neighborhoods and the creek itself. There is a community organization dedicated to this mission called the **Newtown Creek Alliance**. For more information on Newtown Creek and the Newtown Creek Alliance [click here](#).

For information on our upcoming Newtown Creek Tours on 23 Oct and tickets [click here](#).

**Special Tour: Circumnavigation of Staten Island and Lighthouses - SOLD OUT**

**Circumnavigation of Staten Island and Lighthouses  
Sunday, 16 October**

**This tour is now sold out but you can call John at 917 340 3240 to see if there are any last minute cancellations.**

**10:00 a.m. to 1:00 p.m. on board the NY Water Taxi  
Departs from The Battery Slip 6  
(Water Taxi Stop in front of Castle Clinton)**

**Subway: 1 to South Ferry, R/W to Whitehall St.  
or 4/5 to Bowling Green**

**Tickets: \$60 - \$50 for WHC members and seniors**

**Profile: Meg Black**



Meg Black has been the Development and Program Director for the WHC since 2005. Among her accomplishments is the implementation of The Working Harbor Committee Maritime Educational Program for NYC Youth. This program introduces high school students to the importance of our working waterfronts, the types of jobs afforded in the industry and the educational requirements needed to achieve these jobs. As part of the program, Meg invites industry leaders to accompany her to high schools to speak to students about the role of their company in the industry and how they came to work in the industry. In-school workshops are followed up by port terminal tours and a dedicated Hidden Harbor Tour of the NY Harbor. This gives students the opportunity to learn first hand the wonderful opportunities the maritime industry has to offer for future careers.

Meg also is responsible for coordinating free boat tours for seniors throughout the borough of Manhattan, made possible by funding from Manhattan Borough President Scott Stringer.

Prior to joining the WHC, Meg was a district aide and housing specialist for former NYS Senator Franz S. Leichter and was the first Executive Director of the Friends of Hudson River Park.

Meg is also an accomplished Reiki practitioner. You may reach her at: [workingharbor@aol.com](mailto:workingharbor@aol.com)

**Visit us on Facebook & Twitter**

We are now on [facebook](#) (become a fan) & [twitter](#) (follow us)

\*For definition of "ON THE HIP" [click here](#)

[www.WorkingHarbor.Org](http://www.WorkingHarbor.Org)

We are now using PatronMail to manage our email list and communications.

If you wish to be removed or change your email preferences, click below (at the bottom). On the other hand, if you wish to forward this to others, feel free to add new recipients (also at the bottom)

Thank you and we look forward to seeing you on a Hidden Harbor Tour® soon!

Capt. John Doswell - Executive Director - Working Harbor Committee -  
[John@WorkingHarbor.Org](mailto:John@WorkingHarbor.Org)